

RDA-7

7-Channel Power Amplifier

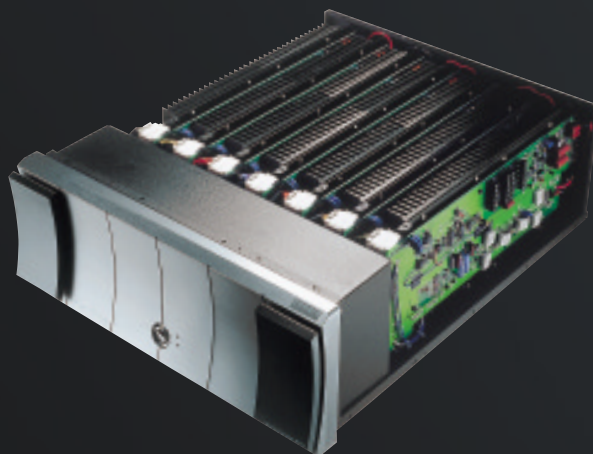


RDA-7

7-Channel Power Amplifier



- THX® Ultra Certified
- THX Surround EX™ Capable (7 channels)
- Low-Negative Feedback Design
- Balanced XLR Inputs
- Symmetrical Bipolar Topology
- High-Current Driver Stage
- 3 Gain Stages
- Wide Range Design
- Massive, High-Quality, Dual 1 kVA Toroidal Transformers
- 600 Joules of Energy Storage
- Over 1000 Watts of Total Output Power (150W x 7 at 8 ohms, all channels driven)





AWESOME IS ALMOST TOO TAME OF A WORD

What do you call a 112-pound (51 kg), seven-channel amplifier with dual 1 kVA toroidal transformers and over a kilowatt of output power? Awesome. Or maybe magnificent. We simply call it the RDA-7. Designed exclusively for Integra Research by the highly respected American company, Balanced Audio Technology, this groundbreaking amplifier offers a unique combination of elegance, massive power and finesse that no others can match.

How can we describe it? Well, it does for amps what the CD did to vinyl LPs—it redefines. If the mark of a truly great amplifier is its ability to deliver tremendous amounts of seemingly effortless power when you need it, then the RDA-7, with its 150 watts x 7 of pristine power into 8 ohms (all channels driven), does just that. It gives you not only the finesse of high-end amplification, combined with exceptional build quality, but also the ability to handle virtually any loudspeaker load and listening levels and room size your house (and neighbors) can cope with. It also gives new meaning to words like “Sensational” and “Stunning” and “Effortless Power.”

So go ahead. Press the power button. You’ll suddenly find that the words “Exhilarating” and “Magnificent” will take on real meaning.

RDA-7

7-Channel Power Amplifier



(Tentative—lettering not final)

SPECIFICATIONS

AMPLIFIER SECTION

Power Output	
Front L/R (8 Ω 20 Hz-20 kHz FTC) (4 Ω 1 kHz FTC)	150 W+150 W (0.1% THD) 300 W/ch (0.1% THD)
Center (8 Ω 20 Hz-20 kHz FTC) (4 Ω 1 kHz FTC)	150 W (0.1% THD) 300 W/ch (0.1% THD)
Rear Surround L/R (8 Ω 20 Hz-20 kHz FTC) (4 Ω 1 kHz FTC)	150 W+150 W (0.1% THD) 300 W/ch (0.1% THD)
THD (at Rated Power)	0.03% (all channels)
Damping Factor (1 kHz, 8 Ω)	40
Input Impedance	47 k Ω
Input Signal for Max Output Power	1.2 V
Input Sensitivity (Unbalanced) (Balanced)	100 mV (RMS) 200 mV
Frequency Response	3.5 Hz-250 kHz (+0 dB, -3 dB)

GENERAL

Dimensions (W x H x D)	17-11/16" x 7-11/16" x 23-7/16" 450 x 195 x 596 mm
Weight	112.41 lbs. 51.0 kg

Due to a policy of continuous product improvement, Integra Research reserves the right to change specifications and appearance without notice.

THX is registered trademark of Lucasfilm Ltd. All rights reserved. "Surround EX" is a trademark of Lucasfilm Ltd. and Dolby Laboratories Licensing Corporation.

Dolby is a trademark of Dolby Laboratories Licensing Corporation.

DTS is a trademark of Digital Theater Systems, Inc. All trademarks, registered trademarks, copyrights and images are the property of their respective owners.

Integra Research, Division of ONKYO CORPORATION Sales & Product Planning Div.: 2-1, Nishin-cho, Neyagawa-shi, OSAKA 572-8540, JAPAN Tel: 072-831-8111 Fax: 072-833-5222
ONKYO EUROPE ELECTRONICS GmbH Industriestrasse 20, 82110 Germering, GERMANY Tel: +49-89-849 32-0 Fax: +49-89-849 32-84 E-Mail: customercare@onkyo.net

www.integraresearch.net