



# north star design

*The secret of sound ...*



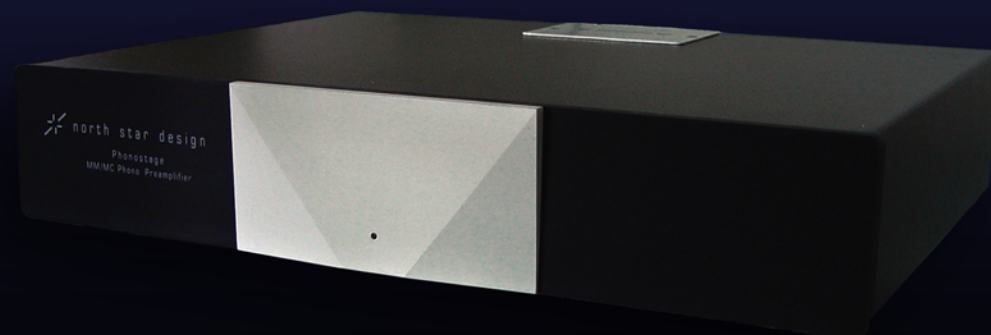
North Star Design is famous to have cancelled the distances between the digital and analogue worlds.

The M192 Digital Combo is our masterpiece for the CD reproduction; new life was given at this support, a new fresh analogue life.

Now the challenge is to offer the same no compromise quality sound in Analogue Amplification.

Our system can offer you the flexibility and the quality of the separate components with the natural synergy of the North Star Design products.

All the North Star Design units are designed to match the maximum listen and technical performances with the lowest circuital complexity. No OP-AMP or capacitor on the signal path are present; discrete components, DC coupling, low feedback are the only guidelines to obtain the right mix of energy, purity and warmth in the sound.



*Concerto*

The same purity and beauty that your eyes can see in the linearity of the appearance; design and functionality are harmonically integrated giving you a very fascinating objects.

North Star Design has a reputation for delivering the best combination of sound quality and price, making us the Italian market leaders by value in both analogue and digital. This is an exceptional result and stems from our deep commitment to offer superior sound quality at sensible prices. This reputation extends worldwide and we now have retailers in more than twenty countries.

## Monoblock Power Amplifier

## Linestage Preamplifier

## Phonostage Preamplifier

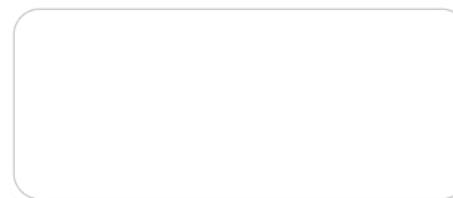
<b>Output Power</b> <i>@ 8 Ohms</i> <i>@ 4 Ohms</i>	Continuous RMS Watts 100 Watts 200 Watts
<b>Bandwidth</b>	0,1 Hz to 120 kHz, -3 dB
<b>THD and Noise</b>	less than 0,05 % at rated power
<b>Damping Factor</b>	greater than 100, 20 Hz to 20 kHz, 8 ohms
<b>Overall Gain &amp; Sensivity</b>	26 dB
<b>Input Impedance</b> <i>balanced</i> <i>unbalanced</i>	36k 47k
<b>Absolute Phase</b>	normal
<b>Power Consumption</b>	10 Watts standby 500 Watts maximum
<b>Inputs</b> <i>balanced</i> <i>unbalanced</i>	user selectable on back panel 1 per channel (XLR) 1 per channel (RCA)
<b>Outputs</b>	1 pair bindings posts
<b>Dimensions</b>	8,5in (W) x 21,2in (D) x 4,7in (H) 21,5cm (W) x 54,0cm (D) x 12cm (H)
<b>Weight</b>	40 lbs. (18 Kg)
<b>Finishes</b>	Concerto, Classic Silver, Classic Black, Silver Satin, Black Satin.

<b>Bandwidth</b>	2 Hz to 700 kHz, -3 dB
<b>THD</b>	less than 0,003% at 1 Vrms/47KOhm 1kHz
<b>Maximum Output Voltage</b>	8,5Vrms (47KOhm load)
<b>Overall Gain</b>	20 dB
<b>Input Impedance</b> <i>balanced</i> <i>unbalanced</i>	50k 47k
<b>Power Consumption</b>	30 Watts
<b>Inputs</b> <i>balanced</i> <i>unbalanced</i>	1 pair per channel (XLR) 5 pair per channel (RCA)
<b>Outputs</b> <i>balanced</i> <i>unbalanced</i>	1 pair per channel (XLR) 2 pair per channel (RCA)
<b>Signal to Noise Ratio</b>	> 90dB Unweighted
<b>Channel Separation</b>	> 80dB @1kHz L-R and R-L (other inputs shorted)
<b>Output Impedance</b>	< 50 Ohm
<b>Dimensions</b>	17in (W) x 15,5in (D) x 3,35in (H) 43,5cm (W) x 35cm (D) x 8,5cm (H)
<b>Weight</b>	22 lbs (10 Kg)
<b>Finishes</b>	Concerto, Classic Silver, Classic Black, Silver Satin, Black Satin.

<b>Bandwidth</b>	5 Hz to 90 kHz, -3 dB
<b>THD</b>	less than 0,01% at 1 Vrms/47KOhm 1kHz
<b>Maximum Output Voltage</b>	8,5Vrms (47KOhm load)
<b>Overall Gain</b>	40dB-60dB@1kHz selectable with dip-switch
<b>Input Impedance</b>	290hm - 100kOhm selectable with dip-switch
<b>Power Consumption</b>	15 Watts
<b>Inputs</b>	1 pair per channel (RCA)
<b>Outputs</b>	1 pair per channel (RCA)
<b>Signal to Noise Ratio</b>	> 80dB Unweighted (MC)
<b>Channel Separation</b>	> 100dB @1kHz L-R and R-L (other input shorted)
<b>Output Impedance</b>	< 50 Ohm
<b>Dimensions</b>	17in (W) x 15,5in (D) x 3,35in (H) 43,5cm (W) x 35cm (D) x 8,5cm (H)
<b>Weight</b>	20 lbs (9 Kg)
<b>Finishes</b>	Concerto, Classic Silver, Classic Black, Silver Satin, Black Satin.



Classic Silver



 north star design

